



Globex Power Group, Inc.

Engineers, Manufacturers & Integrators

Turbine Support Equipment



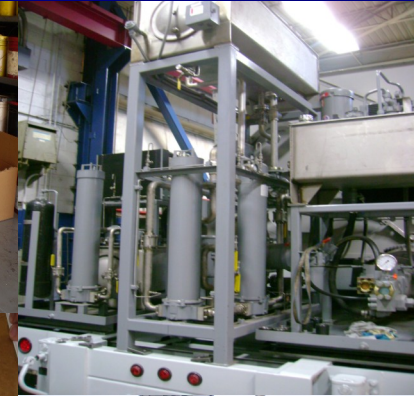
Fabrication Facility

- ◆ 50,000 ft² production area
- ◆ Multiple bays
- ◆ 30 ft. clearance
- ◆ (2) 40-ton bridge cranes
- ◆ (2) 15-ton bridge cranes
- ◆ (6) 5-ton bridge cranes

Turbine Support Equipment

Turbine Support Equipment

- ◆ Re-engineering
 - Design
 - Engineering
 - Value Added Input
- ◆ Lube Systems:
 - Generator (bearing)
 - Engine Lube
- ◆ Hydraulic Systems
- ◆ Starter Systems
- ◆ Fabrication
 - Skid Mounted Equipment
 - Steel, Stainless and Alloys
- ◆ Machining
 - Bridgeport Work
 - Lathe Work
 - Vertical Lathe
 - Horizontal Boring Mill Work
 - General Machining
- ◆ Assembly
- ◆ Electrical Cabling, Harnesses, Controls, PLC Logic, Sensors



GLOBEX POWER GROUP, Inc.

565 Washington Avenue
North Haven, CT 06473

Tel #: 1.800.592.1054

1.203.996.1371

www.globexpowergroup.com

E-mail: gfarley@globexpowergroup.com